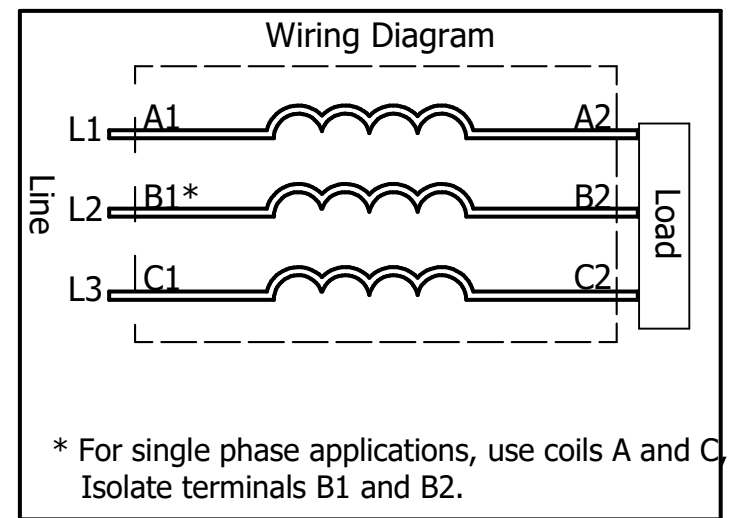
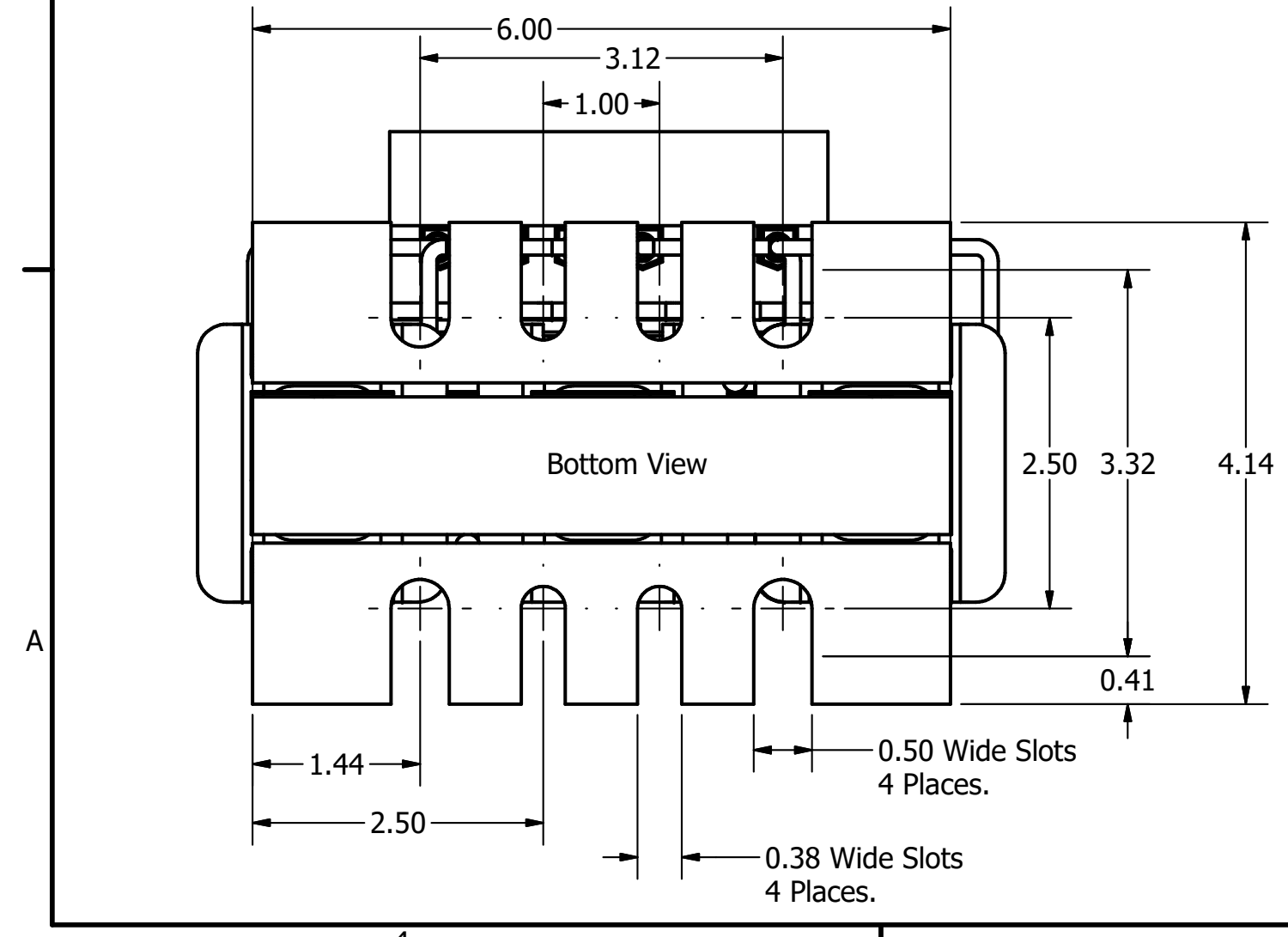
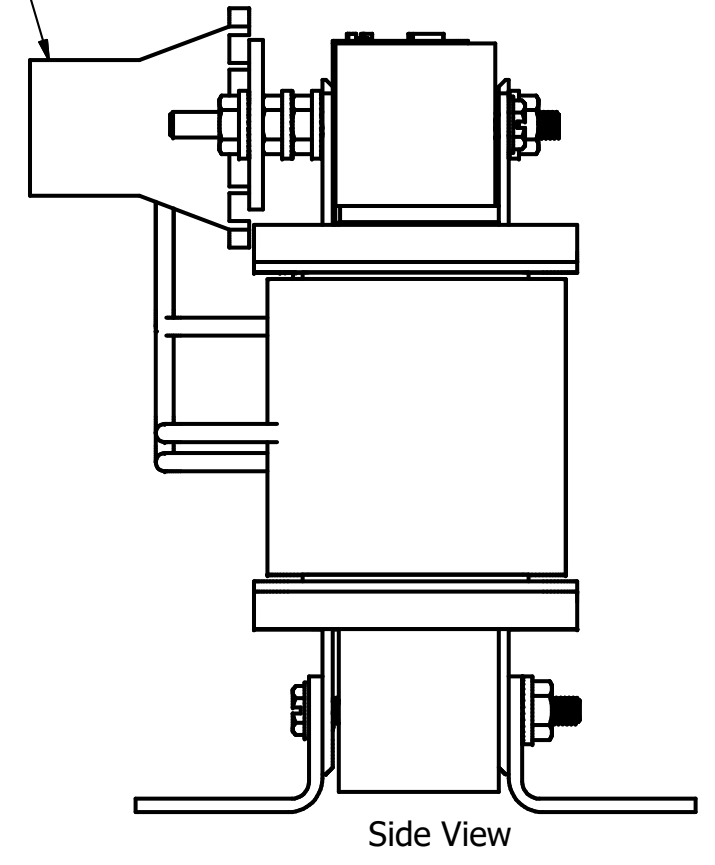
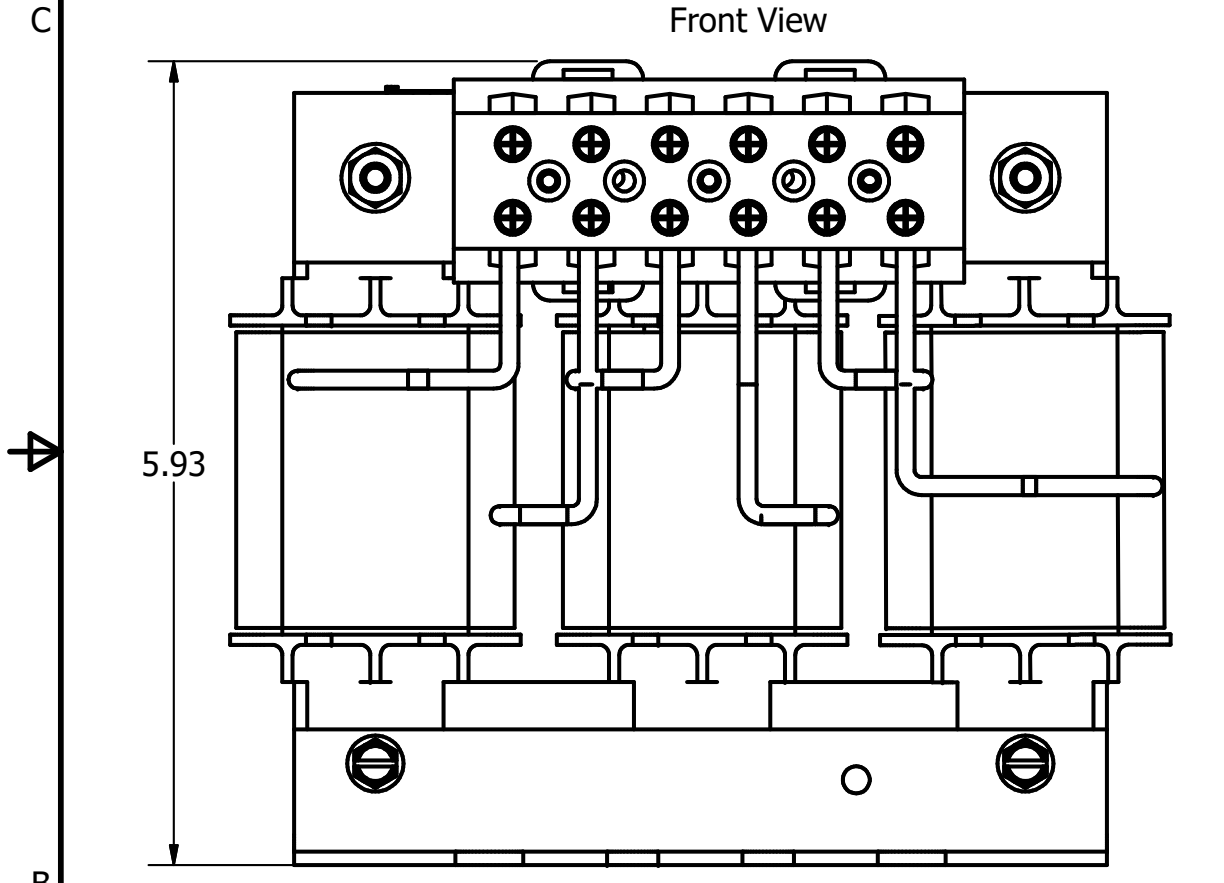


208/240 Rated Voltage, 600 Max Voltage, Low Z, Impedance.

Part Number	Horsepower (HP)	Motor Amps (A)	Maximum Amps (A)	Inductance (uH)	Weight (LBS)	Losses (W)
KDRULC22L	25	74.8	80	138	15	114

(Customer Connections) Markings On Terminal Block For Reference Only.

Wire Range: 1- 4 AWG. Torque : 35 IN-LBS (3.95 Nm)  
 6- 14 AWG. Torque : 30 IN-LBS (3.39 Nm)  
 16- 20 AWG. Torque : 25 IN-LBS (2.28 Nm)  
 22 AWG. Torque : 20 IN-LBS (2.26 Nm)



**TCL** (800) 824-8282 transcoil.com

TCL, LLC  
 Germantown, WI, USA.  
 transcoil.com  
 800-824-8282

KDRUL Drive Reactor  
 KDRUL— Motor Amps —  
 3PH, 50/60Hz, —V Rated, 600V Max, —A Max  
 40C Amb Max, 135C Rise, RoHS  
 Term Torque—lb-in

UL LISTED  
 3RD PART. NO. 5140

DATE CODE A1 A2 B1 B2 C1 C2

Notes:

1. UL file number: cULus Listed File E116124.
2. KDR Drive Reactors Comply With The Thermal and Altitude Standards Set Forth by NEMA ST20-1992.
3. KDR IOM Manual Part Number 30895
4. NEC Current For 208/240 Volts, Horsepower Based On 208 Volts.
5. Material(s) Shall be RoHS Compliant
6. Customer Is Responsible For Installation To Meet All National And Local Electrical Codes.

TCL, LLC CLAIMS PROPRIETARY RIGHTS IN THE MATERIAL HEREIN DISCLOSED. IT IS SUPPLIED WITHOUT PREJUDICE TO ANY PATENT RIGHTS OF TCL AND MAY NOT BE REPRODUCED OR USED TO MANUFACTURE ANYTHING SHOWN THEREIN WITHOUT WRITTEN PERMISSION FROM TCL.			TOLERANCES (EXCEPT AS NOTED) DECIMAL XX ± .25 .XXX ± .10 FRACTIONAL ± 1/16 ANGULAR ± 1°			W132 N10611 Grant Drive Germantown, WI 53022 KDRUL C Frame, Terminal Block Reactor Drawing		
A	As Designed	1/22/18	DSW	DRN BY DSW	DATE: 1/22/18	107512DG		
NO	REVISION	DATE	BY	SCALE: 1/1.5	APRVD:	SIZE C	SHT.4 OF 4	